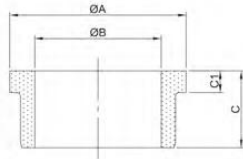


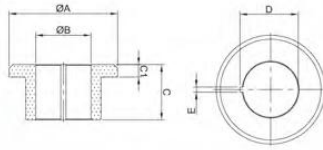
## - Sleeves for Electric Submersible Pump



### Convex stage sleeve

Unit: mm

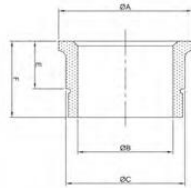
Stock No.	$\Phi A$	$\Phi B$	C
HX018001	24.6	18.0	35.0
HX018002	24.6	18.0	50.0
HX018004	24.6	18.0	25.0
HX035001	48.9	35.1	21.3
HX047002	63.2	47.1	28.5



### Convex stage sleeve with keyway

Unit: mm

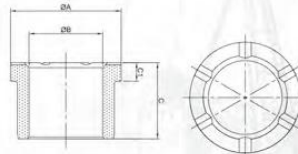
Stock No.	$\Phi A$	$\Phi B$	C	D	E
HX034001	34.4	17.5	17.5	18.4	1.6
HX034002	34.7	17.5	12.7	18.4	1.6
HX034003	36.8	22.3	15.1	23.2	1.6



### Convex stage sleeve with round groove

Unit: mm

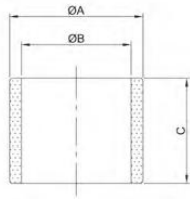
Stock No.	$\Phi A$	$\Phi B$	$\Phi C$	E	F
HX028001	28.0	20.0	25.0	13.0	16.0
HX029001	29.0	22.0	27.0	14.0	17.0
HX034001	34.0	24.0	30.0	15.0	18.0



### Convex stage sleeve with oil groove

Unit: mm

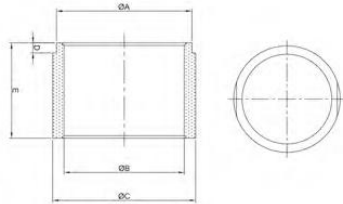
Stock No.	$\Phi A$	$\Phi B$	C
HX045001	24.0	16.0	16.5
HX045002	27.0	19.0	16.5



### Straight tube sleeve

Unit: mm

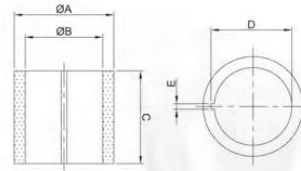
Stock No.	$\Phi A$	$\Phi B$	C
HH101501	20.4	15.8	19.3
HH102202	26.9	22.2	22.2
HH103201	37.0	48.7	32.1
HH104504	53.6	45.5	37.7
HH105101	59.1	51.1	58.5
HH106201	69.9	62.2	24.1



### Straight tube sleeve

Unit: mm

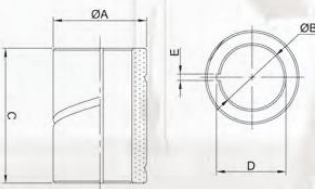
Stock No.	$\Phi A$	$\Phi B$	C	D	E
HX054004	54.0	48.0	57.0	4.0	54.0
HX058005	58.0	50.0	60.0	5.0	60.0
HX060003	60.0	53.0	65.0	8.0	65.0



### Straight tube sleeve with keyway

Unit: mm

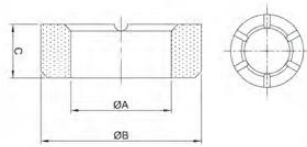
Stock No.	$\Phi A$	$\Phi B$	C	D	E
HX023001	23.8	17.5	14.1	18.4	1.6
HX023002	23.8	17.5	38.1	18.4	1.6
HX025001	36.5	30.2	34.4	31.1	1.6
HX025002	38.1	30.2	50.8	31.1	1.6
HX024001	28.6	22.3	15.6	23.2	1.6
HX024002	28.6	22.3	38.1	23.2	1.6
HX024003	28.6	22.3	26.6	23.2	1.6



### Straight tube sleeve with keyway and spiral groove

Unit: mm

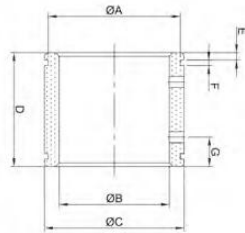
Stock No.	$\Phi A$	$\Phi B$	C	D	E
HX017004	25.0	17.0	36.0	17.9	1.6
HX020007	28.0	20.0	36.0	20.9	1.6
HX022010	28.0	22.0	36.0	23.0	2.0
HX017005	25.0	17.0	32.0	17.9	1.6



### Straight tube sleeve with oil groove

Unit: mm

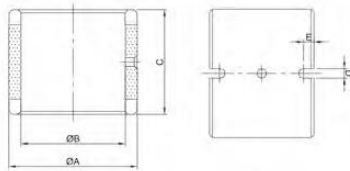
Stock No.	ΦA	ΦB	C	R
HX034001	15.0	27.0	8.0	2.5
HX034002	18.0	30.0	12.0	2.5
HX034003	28.0	38.0	16.0	2.5



### Sleeve with round groove and oil hole

Unit: mm

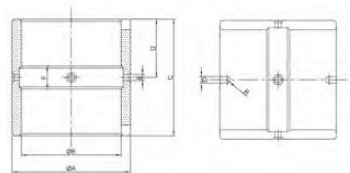
Stock No.	ΦA	ΦB	ΦC	D	E	F
HX017004	58.0	53.0	61.0	40.0	2.0	1.5
HX017005	45.0	40.0	48.0	35.0	3.0	2.0
HX017006	52.0	45.0	58.0	45.0	4.0	2.2



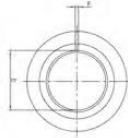
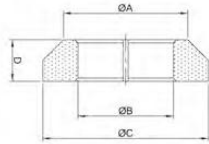
### Sleeve with aligning groove and oil hole

Unit: mm

Stock No.	ΦA	ΦB	ΦC	D	E
HX042003	42.0	34.0	34.0	3.1	3.4



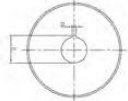
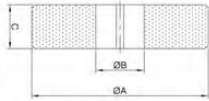
Stock No.	ΦA	ΦB	C	D	ΦE	F	G
HX056009	56.0	46.0	55.0	27.0	2.0	9.0	3.0



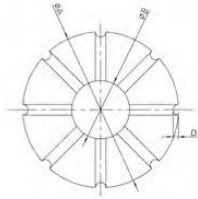
### Thrust sleeve with keyway

Unit: mm

Stock No.	$\Phi A$	$\Phi B$	$\Phi C$	D	E	F
HX045002	45.0	36.0	60.0	13.0	39.0	1.8
HX040003	40.0	35.0	55.0	13.0	37.0	2.1
HX052004	52.0	37.0	63.0	13.0	40.0	3.2



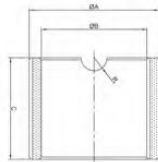
Stock No.	$\Phi A$	$\Phi B$	$\Phi C$	D	E
HX028033	115.0	30.0	28.0	4.0	33.0



### Thrust sleeve with oil groove

Unit: mm

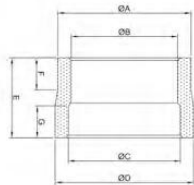
Stock No.	$\Phi A$	$\Phi B$	C	D
HX059001	59.0	22.0	6.0	2.0
HX065001	65.0	25.0	8.0	2.8
HX085001	85.0	32.0	12.0	3.5



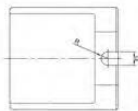
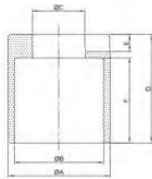
### Nonstandard sleeve

Unit: mm

Stock No.	$\Phi A$	$\Phi B$	C	D	R	r
HX030003	30.0	25.0	24.0	29.0	3.2	0.8



Stock No.	$\Phi A$	$\Phi B$	$\Phi C$	$\Phi D$	E	F	G
HX025007	25.0	19.0	20.0	26.0	16.0	7.0	7.0



Stock No.	$\Phi A$	$\Phi B$	$\Phi C$	D	E	F	G
HX048001	47.0	4.0	26.0	50.0	7.0	42.0	6.2